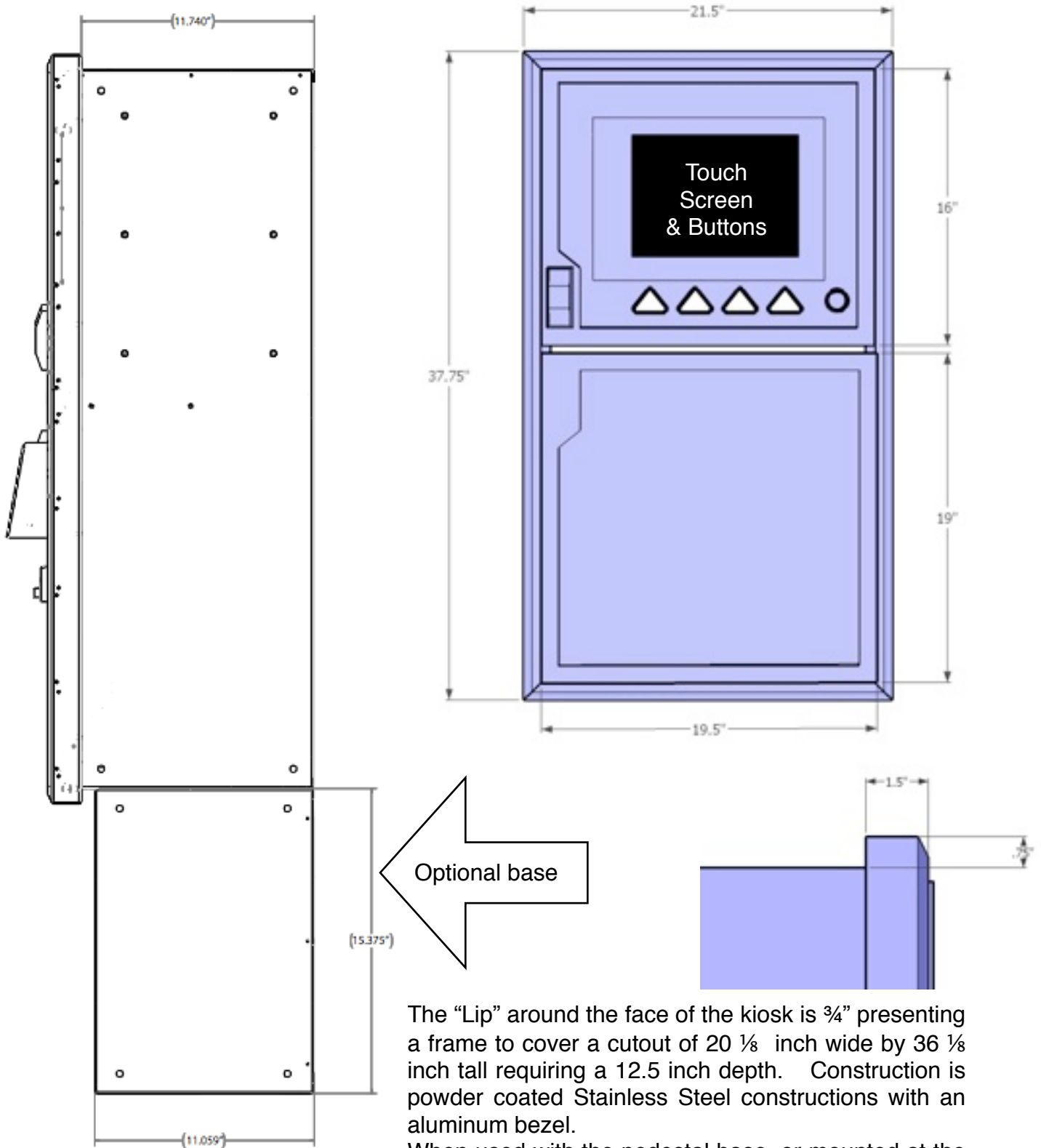


SS Kiosk

Dimensions & Details

CORE



The "Lip" around the face of the kiosk is $\frac{3}{4}$ " presenting a frame to cover a cutout of $20 \frac{1}{8}$ inch wide by $36 \frac{1}{8}$ inch tall requiring a 12.5 inch depth. Construction is powder coated Stainless Steel constructions with an aluminum bezel.

When used with the pedestal base, or mounted at the height noted, the unit complies with ADA access requirements for reach.

SS Kiosk

Dimensions & Details

CORE



Stainless steel construction powered painted for outdoor installations.

May be provisioned to redeem print-at-home receipts, coupons, and issues card or tickets.

Credit card, pin debit, touch screen or tactile button operation, non contact scanner, bill acceptor with locking vault, security alarms, dual sided mag card reader and thermal receipt printer are but a few of the optional configuration choices. The SS Kiosk may be equipped with either coin or bill change making capability - up to 4 different coins and 2 different bills may be accommodated.

The Kiosk is shown here mounted on a separate pedestal - which can include cooling/heating unit for outdoor weather accommodation.

Standard in Red or Gray, with yellow accents, the kiosk may be ordered with a number of custom graphic and themed options.

Power: 5 Amps, 115v AC 60 Hz.

Please provide a GFI circuit when mounted outdoors.

220-240v AC available.

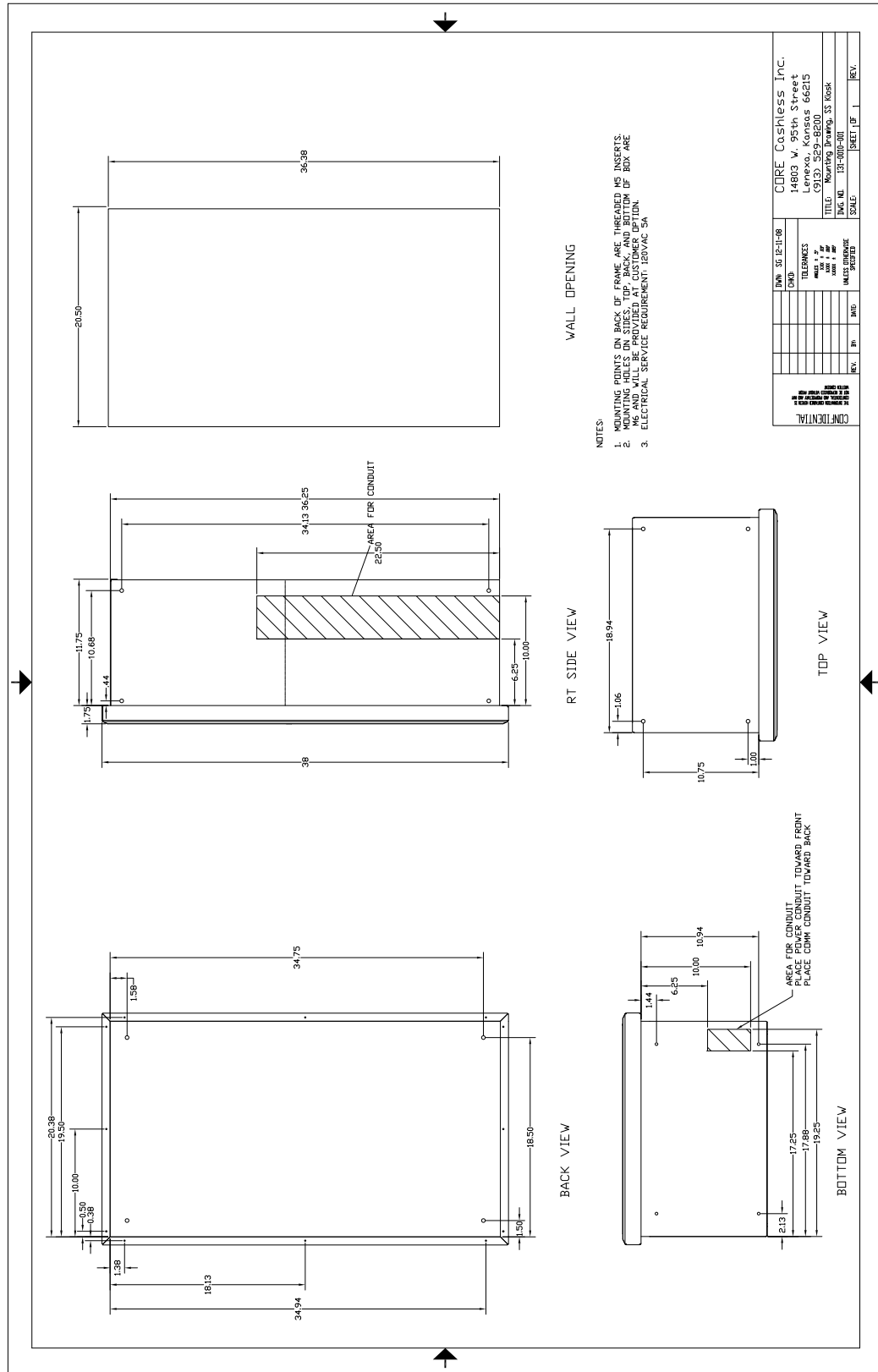
¼ turn T-Handle locks with separate keys for top and bottom cabinet.

Made in USA.

SS Kiosk

Dimensions & Details

CORE



SS Kiosk

Dimensions & Details

CORE

